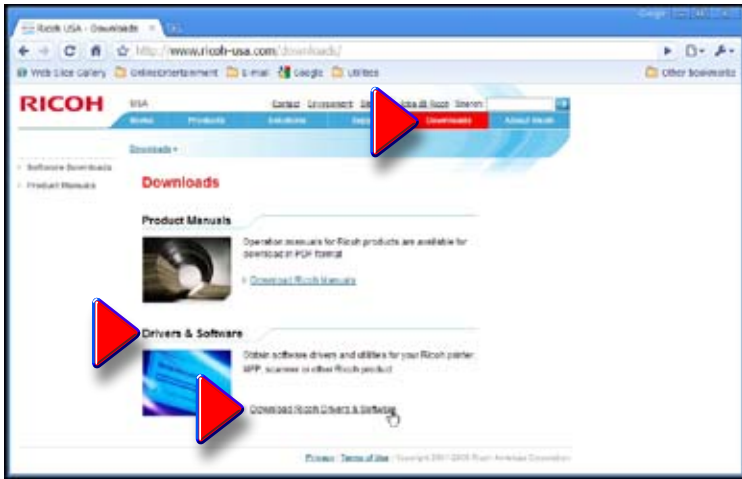


CONFIGURATION INSTRUCTIONS: RICOH AFICIO GX5050N

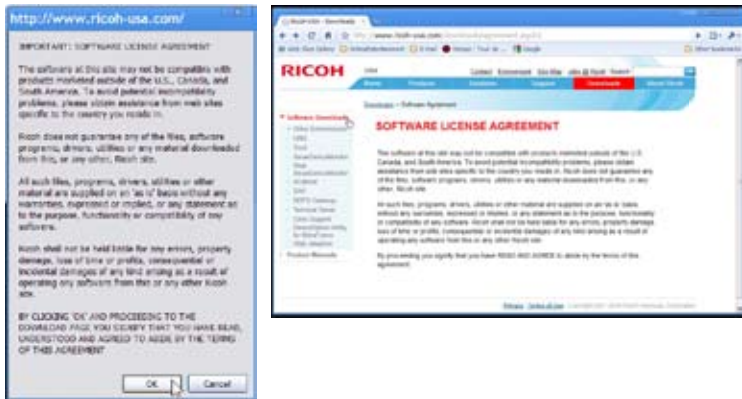
1. Download the Ricoh GelSprinter GX5050N driver from the Ricoh web site: <http://www.ricoh-usa.com>. Select the **Downloads** tab from the main menu.



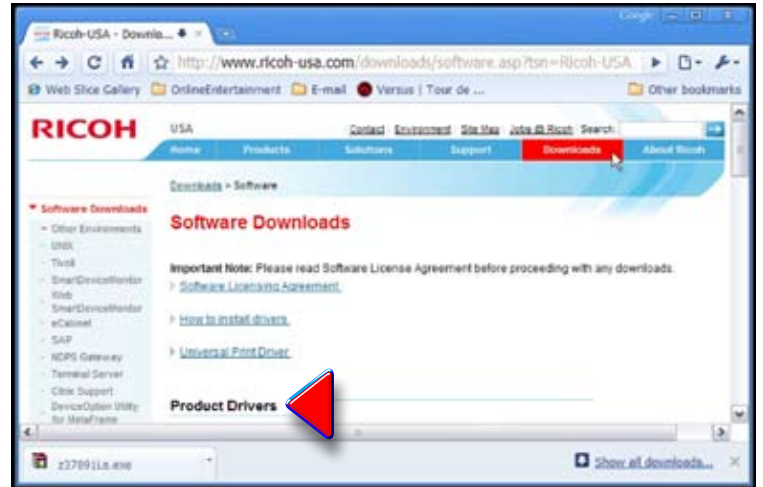
2. In the Downloads window, scroll down to the Drivers & Software section and click on the line option **Download Ricoh Drivers & Software**.



3. The **Software License Agreement** may appear in the next window, in one or the other of these forms. Click **OK** on the form to the left, or click **Software Downloads** on the form to the right, to signify agreement, in order to proceed.



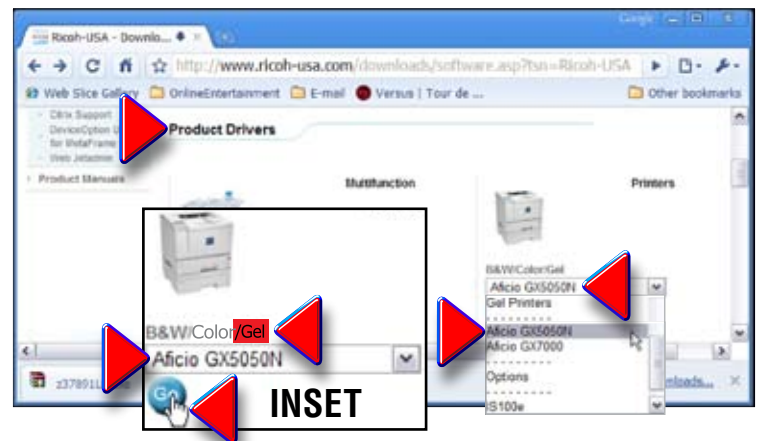
4. In the **Software Downloads** window, scroll down until you see the **Product Drivers** section.



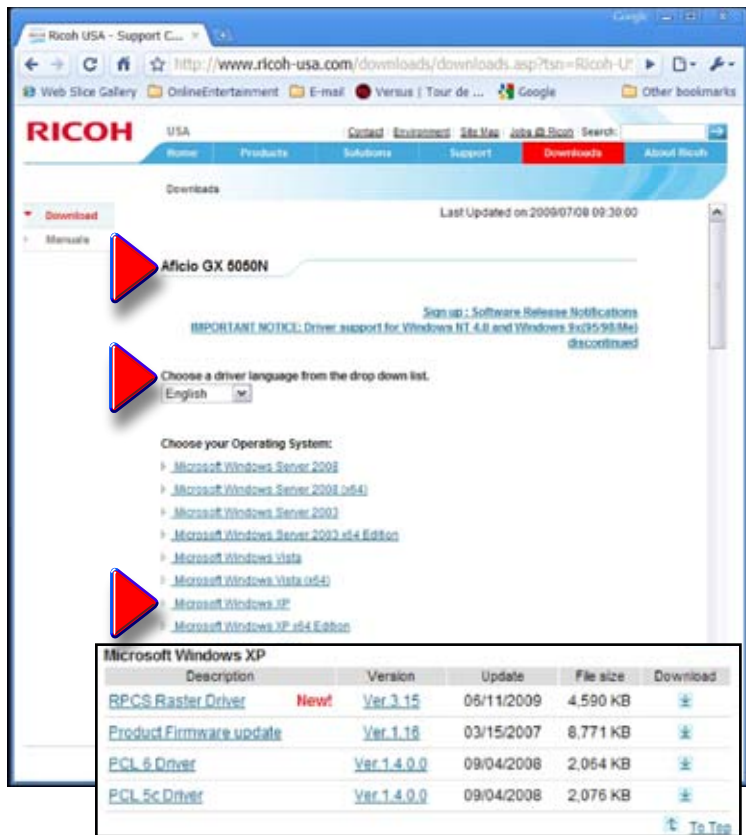
5. Under the heading **Product Drivers**, in the **Printers** subheading, locate the choice that includes **Color** and/or **Gel** (B & W/Color/Gel).



6. Under **Printers**, having located the key word **Gel**, click on the drop-down menu, and find the **Aficio GX5050N** printer as shown. Click the printer title to set it in the menu, then click the **Go** button to proceed (see inset).

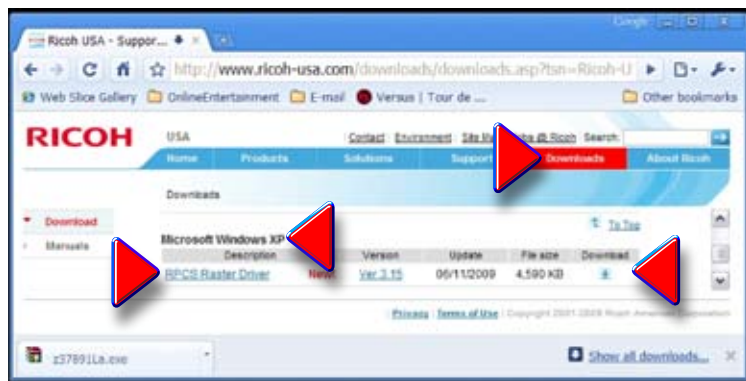


7. In the **Aficio GX5050N** window, choose a **Driver Language**, then an **Operating System**. In this example, we've chosen **Windows XP** for illustrative purposes. Click on your **Operating System** to proceed.



8. The inset above shows the presently available driver choices under **Microsoft Windows XP**. Be sure to choose only the **RPCS Raster Driver** in whatever operating system your hardware currently uses (see Step 9).

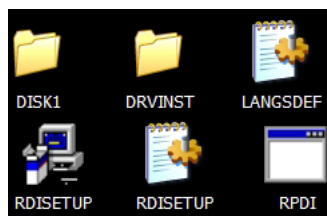
9. Once you have located the **RPCS Raster Driver** associated with your operating system, click on the **Download** arrow (↓) to begin the process.



10. Save the downloaded file to your desktop. It will appear similar to the icon shown. Double clicking on the icon will produce the screens that follow. On the **Open File - Security Warning** screen, click **Run**. Then in **WinRAR**, click install. The **WinRAR** screen will then show the extracted files.



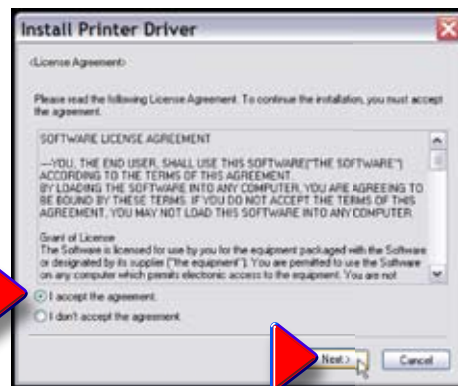
After the **WinRAR self extracting archive** completes extracting files, you will see this array of icons.



11. To install the printer, double click on the icon marked **RDISETUP**, and follow steps 12 through 19.



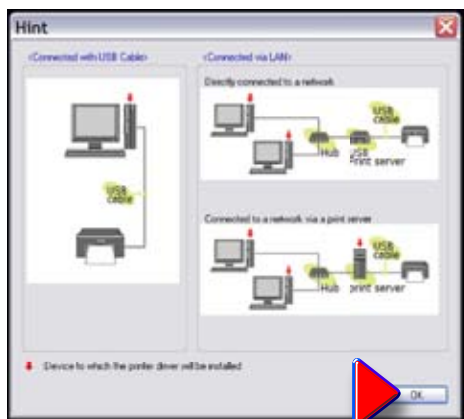
12. The **Install Printer Driver** window opens. Click on the **I accept the agreement** radio button, then click **Next**.



13. Specify how you are connecting the printer. You can see the applicable differences in the two choices, graphically, if you click **Hint**.



14. Study the variations for clarity, choose a connection approach, and click **OK**. Back in the **Install Printer Driver** window, select a radio button (in the illustration, we connect through a usb port) and click **Next**.



15. The program then asks you how to treat the installation. Choose the appropriate radio button (see the illustration below) and click **Next** to continue.



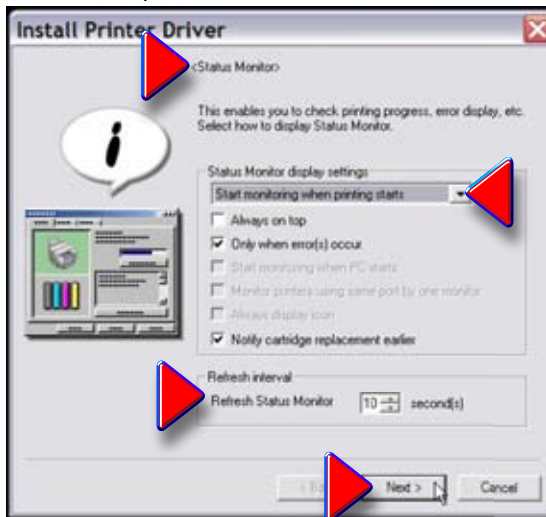
16. Now choose the various characteristics that apply to your installation and click **Continue**.



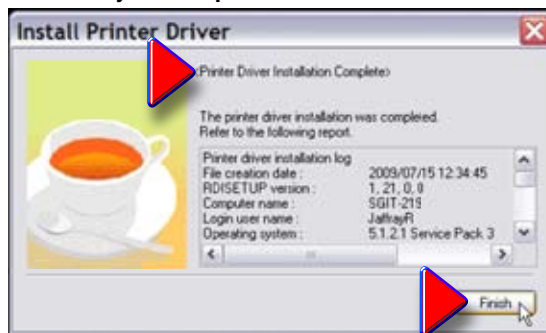
17. The following screen indicates that the software is loading.



18. Choose the characteristics of the **Status Monitor** that you require and click **Next** to proceed.



19. Your printer driver installation is complete when this screen appears. **Do not restart your computer.**



20. Download the ICM color profile from the Sawgrass web site at this link: <http://www.sawgrassink.com>.



21. Follow the tabs **Technical Support > SubliJet Tech Support > SubliJet Downloads > PowerDriver Download** to locate and download the ICM profile.



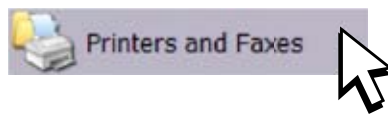
22. Select the profile of your preference (v1 or v2) for the **Ricoh GX5050N** and click on it.



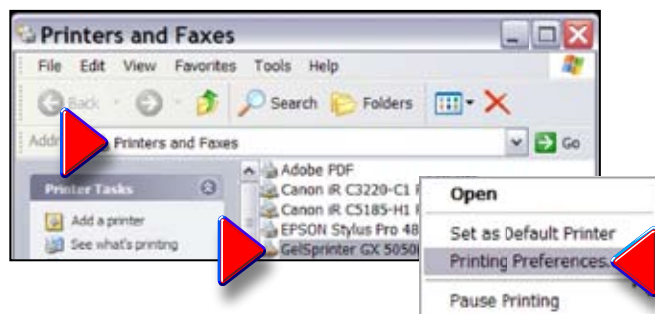
Download and installation may be automatic. If not, click on the **ICC Profile**, select **Save**, and save the file to your desktop. Once the ICC Profile is downloaded to your desktop, right click on it and select **Install Profile** from the drop-down menu. The installation occurs automatically. **Restart your computer after completion.**



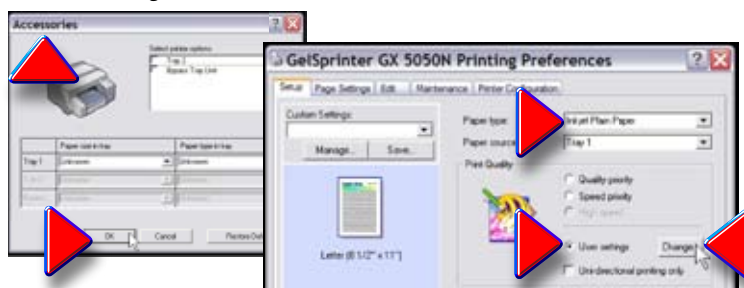
23. Once the computer has spooled back up, click **Start** on the desktop, then select **Printers and Faxes**.



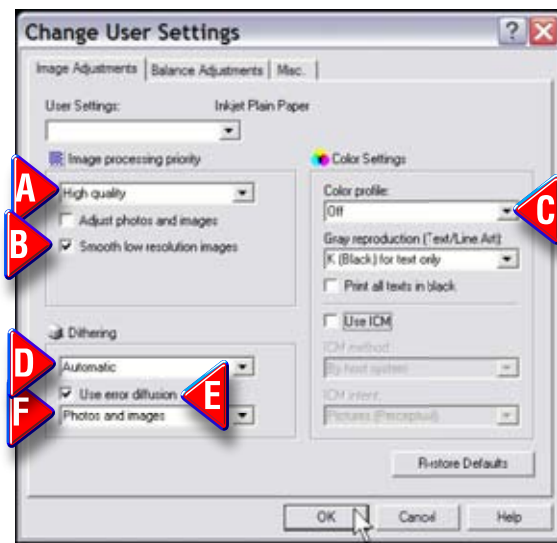
24. In **Printers and Faxes**, right click on the **GelSprinter GX5050N**, and choose **Printing Preferences**.



25. If an **Accessories** screen opens, click **OK** to continue to the **Printing Preferences** dialog screen. Once in the preferences dialog, select **Inkjet Plain Paper** in the **Paper Type** drop-down menu, then fill the radio button **User Settings** to activate the **Change** button. Click the **Change** button.

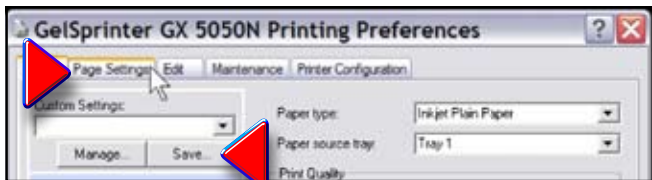


26. Set the properties in the **Change User Settings** dialog as follows:

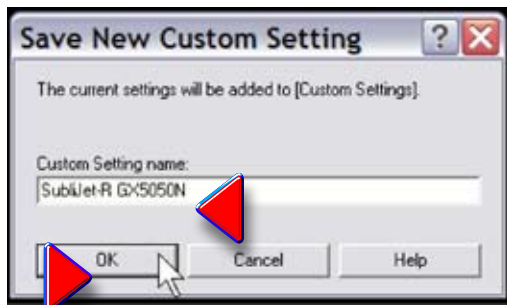


- A Image processing priority: **High Quality**
- B Smooth low resolution images: **Check Box**
- C Color Settings/Color profile: **Off**
- D Dithering: **Automatic**
- E Use error diffusion: **Check Box**
- F Drop down menu: **Photos and images**

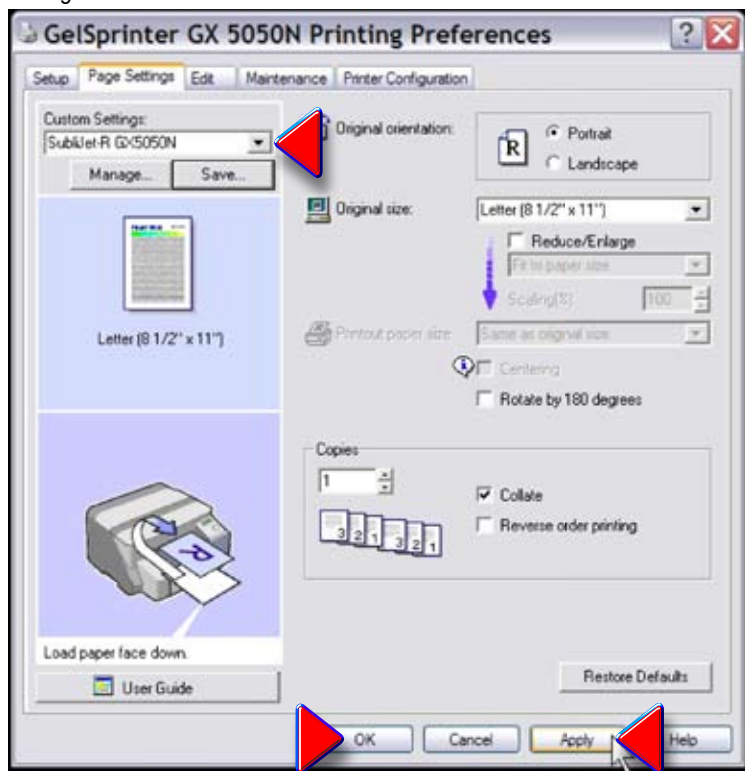
27. Click **OK** to return to the printing preferences screen. At the top, click on the **Page Settings** tab, and then the **Save** button to name your setup for later use.



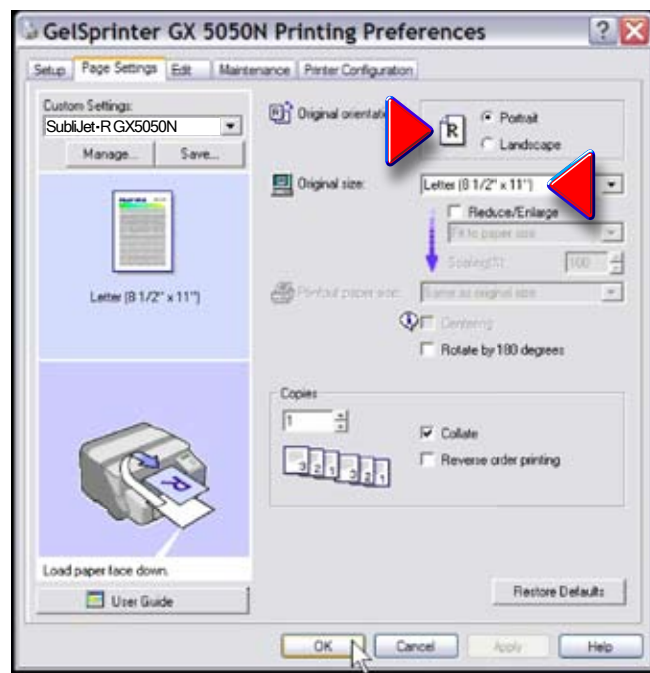
28. In the **Save New Custom Setting** dialog, under **Custom Setting** name, type in identifiers for this setup (we've chosen the ink and the printer, for example). Then click **OK** to return to the printing preferences dialog.



29. Make sure "Sublijet-R GX5050N" is selected in the **Drop-Down** menu below **Custom Settings**. Then click **Apply** to apply and save the settings just created. Click **OK** to save and exit the printing preferences dialog.



Please Note: *Custom Settings* does not save *Paper Setting* information. Therefore the paper settings must be re-visited each time the paper size is changed.



Please Note: There is no "Mirror" option on this driver. Reversing of the image needs to be performed in the **Graphics** program *prior* to printing.

